



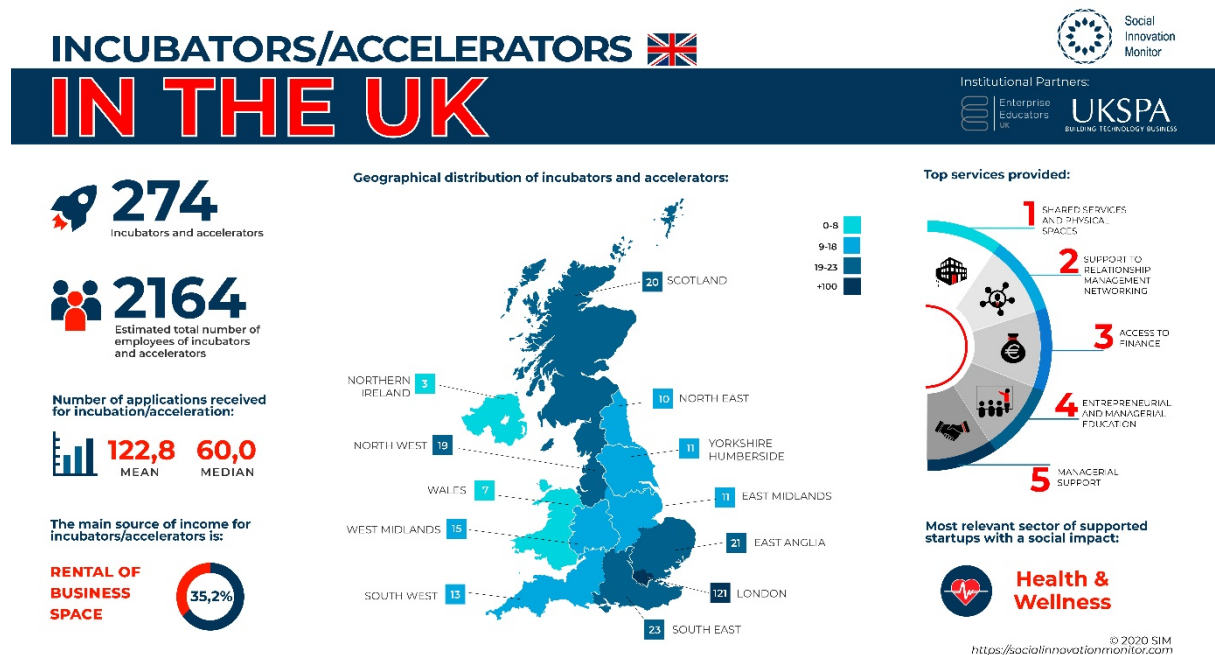
PRESS RELEASE

PUBLISHED TODAY THE FIRST REPORT ON INCUBATORS AND ACCELERATORS IN THE UK

According to the research, there are a total of 274 incubators and accelerators in the UK, of which 40 are corporate incubators and 80 are university incubators. The most diffused services provided are provision of physical spaces, networking services, access to finance and managerial support and training.

Social Innovation Monitor (SIM), an international research team based at Politecnico di Torino university, in collaboration the **Enterprise Educators UK Association** and the **UKSPA Association**, has published the first report on the impact of incubators/accelerators in the UK. The research team has leveraged the successful publication of similar reports in Italy for three years and the support of Instilla, Experientia and Social Innovation Teams (SIT).

The Report is available at this link: <https://socialinnovationmonitor.com/en/uk-incubators/>.



The Public Report presents the **geographical distribution** of incubators/accelerators in the UK, analyses the **legal nature** and the different types of



incubators/accelerators and gives an overview of the **services provided** and the differences between the different **incubation/acceleration programs**. Moreover, it highlights characteristics and challenges faced by incubators/accelerators who support entrepreneurial teams and organizations with **significant social and/or environmental impact**.

According to the research, **there are 274 incubators and accelerators in the UK, with an estimated number of employees of 2164**. On average these incubators receive 122,8 applications per year and their main source of income is “Rental of business space”.

For British incubators and accelerators, **the most important services are provision of physical spaces, networking services, access to finance and managerial support and training**. The startups with a significant social and environmental impact most supported by incubators and accelerators in the UK are those in the **Health & Wellness sector**.

United Kingdom is not the only country analyzed by the Social Innovation Monitor (SIM) research team. In the coming weeks, **SIM will publish, for the first time, a Report aggregating data on incubators/accelerators in France, Germany, Italy, Spain and the UK**.

As underlined by Professor Paolo Landoni of the Politecnico di Torino, Scientific Director of the Research, *"We are pleased to have managed to carry out this research in five European countries in such a difficult period. We are grateful to the incubators and accelerators who participated and to our international partners. We are convinced that incubators and accelerators play a fundamental role in the European entrepreneurial ecosystem and it is important to create and compare their activities in Europe."*

Moreover, Gareth Trainer, Chair, Enterprise Educators UK and Assistant Director for Enterprise & Entrepreneurship, Newcastle University, UK explained *"It has been a pleasure to support the team in undertaking this insightful research and we are particularly pleased that it identifies the important role our member universities and their skilled educators and practitioners play in the entrepreneurial ecosystem of the UK; a role that can only become increasingly crucial to the economy and society more broadly"*.



**POLITECNICO
DI TORINO**



Enterprise
Educators
UK

The Report on European incubators/accelerators and the Full Reports of France, Germany, Italy, Spain, and the UK will be available soon. All Reports will be available in English. A webinar to present the European data will be announced in the coming weeks.

For any information please send an e-mail to sim@polito.it

.....

Social Innovation Monitor (SIM)

www.socialinnovationmonitor.com

Social Innovation Monitor (SIM) is a team of researchers and professors of several European universities and research centres. SIM members are interested in innovation and entrepreneurship, with a focus on innovation and entrepreneurship with significant social and environmental impact. SIM is based at the department of management (DIGEP) of the Politecnico di Torino university in Italy. The team is coordinated by Prof. Paolo Landoni of Politecnico di Torino.

Politecnico di Torino

<https://www.polito.it>

Politecnico di Torino was founded in 1906 and originates from the School of Application for Engineers established in 1859. It is accredited by international rankings as one of the leading technical universities in Europe, with about 35,700 students, 16% of whom are foreigners, from over 100 countries.

At the Polytechnic, training and research in the fields of Engineering, Architecture, Design and Planning are integrated and integrated to provide a concrete response to the needs of the economy, the territory and above all the students, with a view to a strong internationalisation of teaching, research and technology transfer activities, with collaborations with the best universities and research centres in the world and agreements and contracts with major international industrial groups, but also with local companies, where it is a reference point for innovation and a driving force for development.

MEDIA RELATIONS- POLYTECHNIC OF TURIN

Resp. Elena Foglia Franke, Marzia Brandolese, Silvia Brannetti - tel. +390110906286 - relazioni.media@polito.it

Facebook: <http://www.facebook.com/politecnicotorino> - Twitter: @poliTOnews

Enterprise Educators UK

www.enterprise.ac.uk

Enterprise Educators UK is a membership organisation that enables and celebrates excellence in enterprise and entrepreneurship education. We achieve this by connecting educators and practitioners so they learn from each other through sharing good practice and are inspired to increase the scale, scope and effectiveness of their practice. We award research funding and bursaries and we provide practical resources, tools and techniques. Our members and extended global network connect and share practice through our international conference (IEEC) where our National Enterprise Educator Awards are presented each year.

Contact: kate@enterprise.ac.uk